



مبادرات محمد بن راشد آل مكتوم العالمية  
Mohammed Bin Rashid  
Al Maktoum Global Initiatives



دبي العطاء  
Dubai Cares

# ADOPT A COMMUNITY KITCHEN IN KENYA

**PROGRAM BRIEF**





## THE CHALLENGE: CLASSROOM HUNGER UNDERMINES LEARNING

Classroom hunger is one of the most critical barriers to education. Across Africa, more than 90 percent of children lack access to a basic nutritious diet, and over half do not eat at recommended frequencies. In Kenya alone, **60 percent of children suffer from inadequate nutrition**, directly undermining attendance, concentration, and learning outcomes. The World Bank estimates that poor education access and low learning levels could cost low and middle income countries more than **\$10 trillion** in lost lifetime earnings.

In rural communities, families often face high food prices and limited access to diverse diets. The impact on children is severe: **one in four children is stunted, and over 11 percent are underweight**.

## THE OPPORTUNITY: A HOLISTIC SCHOOL FEEDING MODEL

Dubai Cares invites donors to support a transformative program in Kenya that addresses classroom hunger through the **construction of climate-friendly community kitchens in Embu County**, where classroom hunger is a critical barrier to education. In partnership with Food for Education (F4E), a pioneering Kenyan led organization recognized across Africa for its innovative school feeding model. Dubai Cares will fund the construction of kitchens that prepare and distribute **nutritious meals daily** to early learners in rural schools.

# WHAT THE PROGRAM DELIVERS

The kitchens will produce safe, high-quality meals for approximately **400 young learners** (50 percent girls) across **21 schools** every day, while supporting local livelihoods and generating employment for **164 community members**, mainly women, as cooks, riders, and program officers.

Each morning, cooks prepare:

- Fortified porridge (uji) for breakfast
- Balanced lunches made from locally sourced grains, legumes, and vegetables

Meals are delivered to nearby schools by motorcycle in insulated containers that maintain food quality and temperature. Every child receives standardized portions in reusable cups and containers, ensuring hygiene and nutritional consistency.

## CLIMATE-FRIENDLY, DURABLE INFRASTRUCTURE

The kitchens will be built as a reinforced masonry structure designed for safety, longevity, and environmental efficiency. It will include concrete foundations, natural stone walling, stainless steel fittings, and smoke free biomass cookstoves powered by eco briquettes. This clean energy alternative reduces emissions and cooking time by nearly **50 percent**, helping ensure safe working conditions and long term sustainability.





## A MODEL BUILT ON LOCAL OWNERSHIP AND SHARED RESPONSIBILITY

Food for Education's model is built on local ownership and co-investment:

- Local governments contribute to meal delivery costs.
- Support from Dubai Cares' donors funds the capital expenditure and part of the meal subsidy.
- Parents make small co-payments through F4E's Tap2Eat cashless system to promote transparency and accountability.
- Importantly, 80 percent of ingredients are procured from more than **5,000 smallholder farmers** across Kenya, **75 percent of them women**, strengthening food systems and creating reliable income opportunities in rural areas.

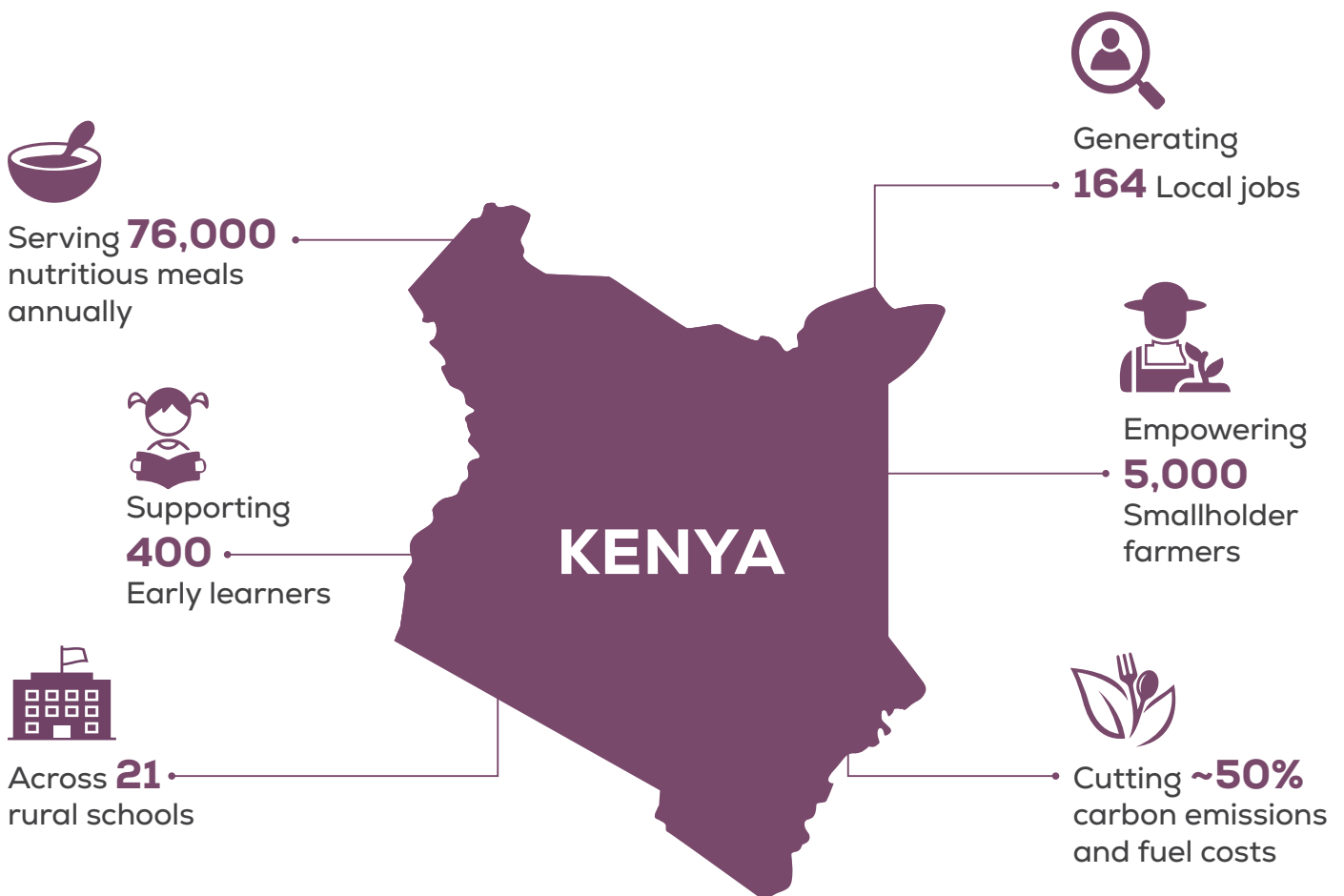
# WHY IT WORKS

Through this integrated approach, the program:

- Nourishes **children** so they can learn and thrive
- Creates meaningful local employment, primarily for **women**
- Supports smallholder **farmers**, especially women farmers, through local procurement
- Strengthens accountability and **ownership** through shared financing

School feeding has been proven to increase attendance and enrolment by up to **10 percent**, improve concentration, and reduce dropout rates, making it one of the most effective social safety nets for vulnerable populations.

## MULTI-DIMENSIONAL IMPACT



## ALIGNMENT AND SUSTAINABILITY

This initiative aligns with Kenya's National School Feeding Strategy, which aims to reach **10 million children by 2030**, and supports SDG 1 (No Poverty), SDG 2 (Zero Hunger), and SDG 4 (Quality Education).

Construction will take about one year, after which the kitchen will remain a public asset, owned and maintained by local governments in partnership with F4E, continuing to serve generations of learners as part of a sustainable, African led solution to end classroom hunger.

# PROGRAM AT A GLANCE

PROGRAM TITLE	ADOPT A COMMUNITY KITCHEN IN KENYA
Program Type	<ul style="list-style-type: none"> <li>• Construction of one community kitchen in Embu County to provide daily nutritious meals to early childhood learners in 21 rural schools.</li> <li>• Climate-friendly infrastructure equipped with eco-briquette stoves, stainless-steel fittings, and reinforced masonry design.</li> <li>• Local sourcing model connecting over 5,000 smallholder farmers (75% women) across Kenya.</li> </ul>
Program Partner	<ul style="list-style-type: none"> <li>• Food 4 Education (F4E)</li> </ul>
Program Duration	<ul style="list-style-type: none"> <li>• Community kitchen construction: 2-3 months</li> <li>• Ongoing meal service and community co-financing: continuous after completion</li> <li>• Total program duration (Dubai Cares support phase): Approximately 1 year</li> </ul>
Direct Beneficiaries	<ul style="list-style-type: none"> <li>• 400 early childhood learners (ages 3–6), 50% girls</li> <li>• 164 local staff including cooks, riders, and program officers (83% women)</li> </ul>
Indirect Beneficiaries	<ul style="list-style-type: none"> <li>• 5,000 smallholder farmers and aggregators supplying grains, legumes, and vegetables (75% women) across Kenya</li> <li>• Parents and community members benefiting from improved child nutrition and school attendance</li> </ul>
Program Cost	<ul style="list-style-type: none"> <li>• AED 182,000</li> </ul>

## EXPECTED OUTPUTS

- One community kitchen constructed using durable masonry materials, equipped with stainless steel fittings and eco briquette clean energy cookstoves
- Approximately 76,000 meals prepared and delivered annually to 400 early childhood learners in 21 rural schools
- 8–10% increase in attendance and enrolment rates among early learners in targeted schools
- Creation of 164 local jobs, 83% held by women
- Engagement of 5,000 smallholder farmers and aggregators, 75% women
- Reduction of carbon emissions and cooking fuel costs by nearly 50% through eco briquettes
- Strengthened community participation through Tap2Eat contributions



## PROGRAM COMPONENTS

HARDWARE	SOFTWARE
Construction of one permanent, community kitchen with energy-efficient eco-briquette stoves, reinforced masonry structure, stainless-steel fittings, and food-safe storage facilities.	Capacity building for kitchen staff and riders; nutrition and hygiene training; digital monitoring through Tap2Eat system; local procurement and farmer integration.

## VISITING THE PROGRAM

Donors may choose to visit the program at their own expense to witness the kitchen in operation and take part in milestone activities such as **engaging with the riders who deliver meals to nearby schools and the teachers.**

These visits provide a unique opportunity to witness firsthand the transformative power of this initiative, communities uniting to feed their children, **local women leading daily operations,** and the tangible impact of global solidarity in action.

## FURTHER READING

[About Dubai Cares](#)

[About UNICEF's Dubai Declaration: A Fair Start in Life for Every Child](#)

[Dubai Cares Framework for Global Education Transformation](#)

## CONTACT US

For further information, please reach out to us at [Get.involved@Dubaicares.ae](mailto:Get.involved@Dubaicares.ae)

📍 Dubai Cares, Building 16, Dubai Healthcare City, Dubai, UAE

☎️ +971 4 450 4550

🌐 [www.dubaicare.ae](http://www.dubaicare.ae)